

Rolfe East



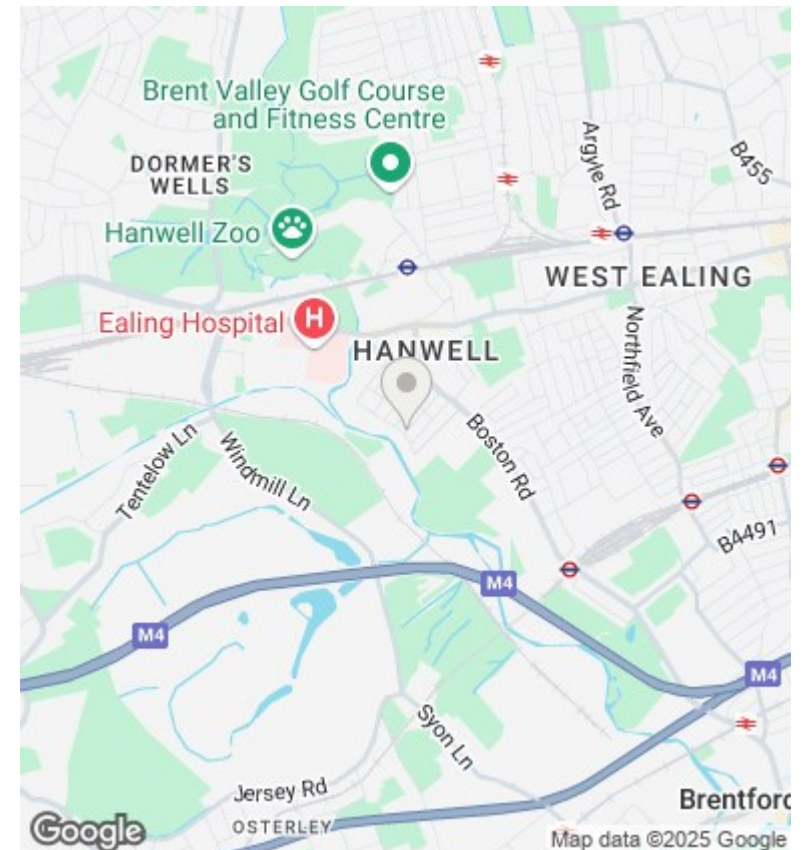
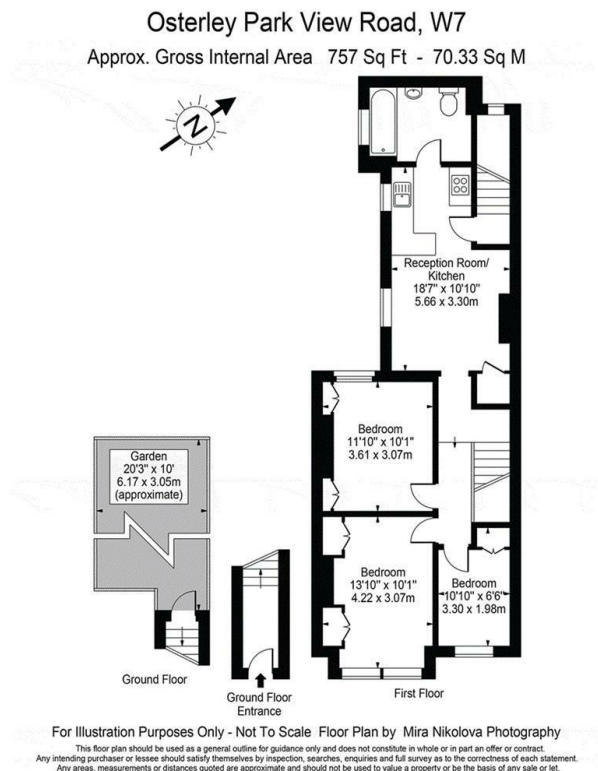
Osterley Park View Road, Hanwell, W7 2HH

£449,950

- Three bedroom maisonette
- Being sold with an extended lease
- Close to Boston Manor underground station (Piccadilly Line)
- Private rear garden
- Chainfree sale
- Must be viewed
- Flexible living accommodation
- Close to Hanwell Station (Overground and Elizabeth Line)

289 Northfield Avenue, Ealing, W5 4XB
020 8579 1111

northfields@rolfe-east.com
<https://www.rolfe-east.com/>



Directions

Viewings

Viewings by arrangement only. Call 020 8579 1111 to make an appointment.

Council Tax Band

C

EPC Rating:

E

Energy Efficiency Rating		
	Current	Potential
Very energy efficient - lower running costs		
(92 plus) A		
(81-91) B		
(69-80) C		
(55-68) D		
(39-54) E	41	61
(21-38) F		
(1-20) G		
Not energy efficient - higher running costs		
England & Wales	EU Directive 2002/91/EC	